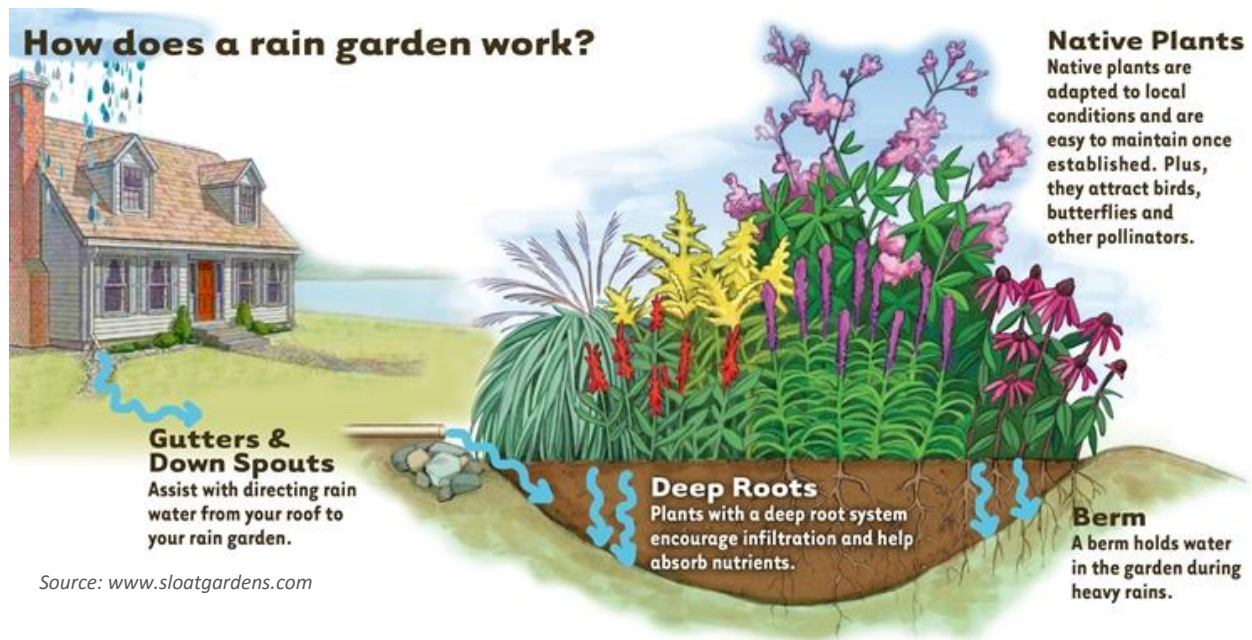


What is a rain garden?



Rain Gardens: Improve Stormwater Management in Your Yard

Stormwater refers to rain and melted snow and ice. Stormwater runoff from your roof, driveway and other hard surfaces in your yard is typically directed towards the street and into the municipal storm sewer system. This stormwater runoff, which has picked up harmful substances such as road salt, heavy metals and oils, ends up in streams, lakes or other water bodies, where it can harm water quality and aquatic habitat. Meanwhile, water used for lawns and gardens is drawn from the local drinking water supply. A rain garden is a planted depression or a hole that allows rainwater runoff from roofs, driveways, walkways, parking lots, and compacted lawn areas, the opportunity to be absorbed.

Tip: Call Before You Dig

- Before digging any test pits or depressions in your yard, locate buried wires and pipes. Call your local service providers for assistance.

For More Information: *How to Install a Rain Garden:* www.cmhcschl.gc.ca or www.raingardentour.ca



Bathurst Sustainable Development/ Développement Durable Bathurst

www.bathurstsustainabledevelopment.com

